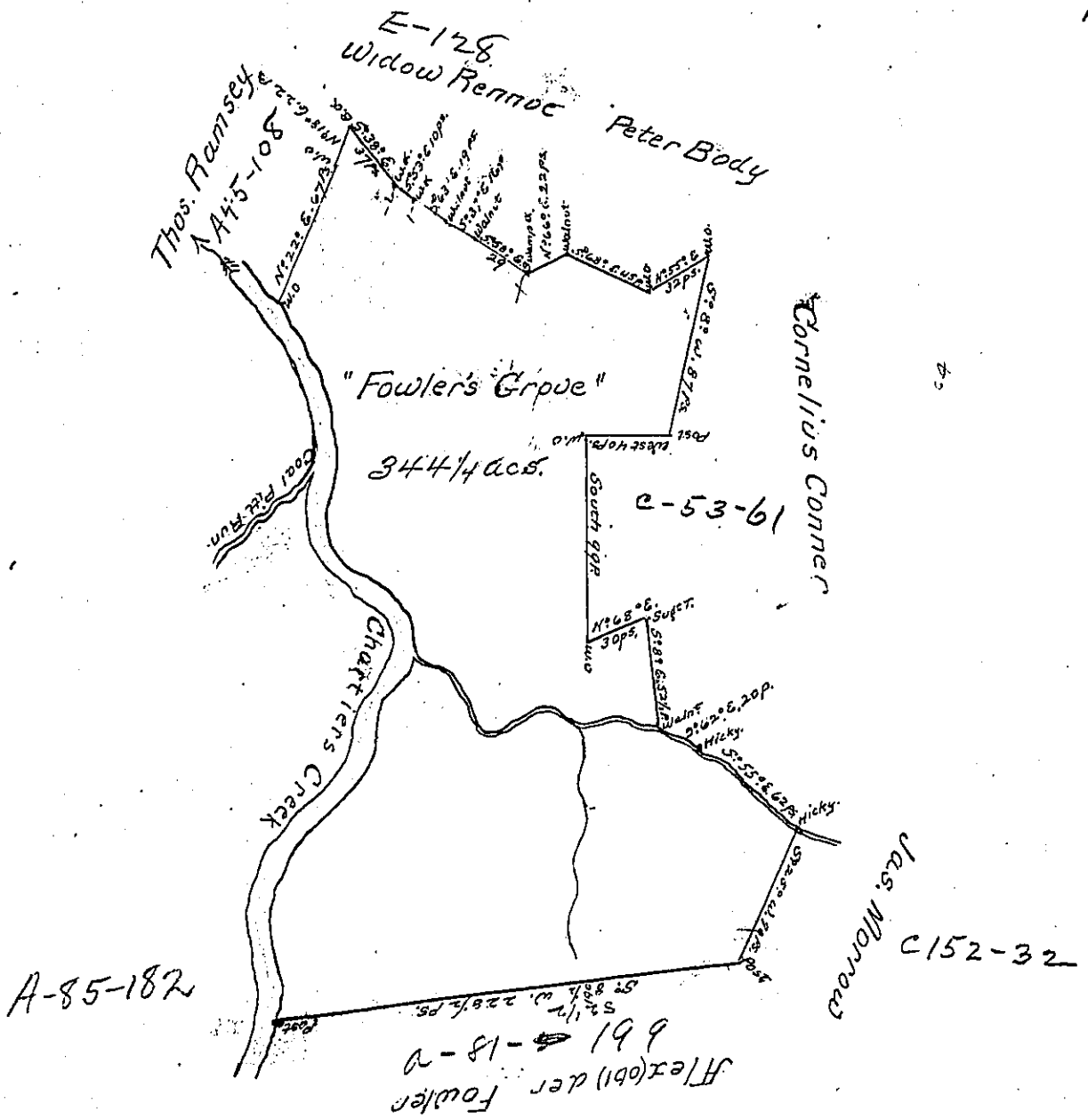


XV
200
P12-251
56
1901

Courses & down
Chartiers Ck.

- N: 8: E. 22 ps.
- N: 20: W. 30 do.
- N: 26: E. 60 do.
- N: 53: E. 32 do.
- North 36 do.
- N: 50: E. 28 do.
- N: 7: W. 24 do.
- N: 55: W. 50 do.
- North 25 do.
- N: 13: E. 30 do.
- N: 28: W. 60 do.

Total 397



A Draught of a Survey called "Fowler's Grove" situate on Chartiers Ck. in Washington County, containing 344 1/4 acs. and the usual allowce. for Highways &c. executed April the 4th. 1787 for Alex Fowler acc. of Henry Ewatt in pursuance of a warrant granted to said Ewatt for 400 acs. dated Feby. ye 10th. 1785

Presley Nevill }
Mattw. Ritchie } 19p.

Jno. Lukens: Esqr. Sur. Genl

IN TESTIMONY that the above is a copy of the original remaining on file in the Department of Internal Affairs of Pennsylvania, made conformably to an Act of Assembly approved the 16th day of February, 1833, I have hereunto set my Hand and caused the Seal of said Department to be affixed at Harrisburg, this first day of April 1902.

James W. Fatta
Secretary of Internal Affairs.